

TERM ONE: WEEK 2 TUESDAY 8TH FEBRUARY 2022

EBBETT PARK SCHOOL

EXCELLENCE, PRIDE & SPIRIT



WELCOME BACK

We are into week two of the 2022 academic year and I hope that everyone enjoyed the long weekend, despite the wet weather we are experiencing.

It was great to see everyone back last week and we are looking forward to seeing more of you back this week. While this is, yet again, a different start to the academic year I know that the team at Ebbett Park School have Alert Level Red well in hand and have your children's well-being and learning well in hand.

I have been fortunate enough to secure 10 weeks sabbatical this term so while I was in last week I will not be in again until term 2. While I am away I know that the school is in good hands with Mr Dufty at the helm.

During my sabbatical I will be working on developing Seesaw as a assessment, planning and reporting tool with the idea that we can report to whānau continuously throughout the year, keeping you informed about learning, achievement towards the New Zealand Curriculum and next learning steps. I will work directly with two classrooms, rooms 5 and 10, to research what whānau would like to see when we report to you on an ongoing basis and then trial the design/method to gain feedback before implementing this concept of reporting across the school. It is exciting and I am looking forward to developing a more time effective and ongoing connection between home and school.

It does feel strange that I will not be seeing all our gorgeous tamariki every day and I will miss you all dearly. However, this time also gives me a chance to be a more 'present' mum to my daughter Belle and her friend Sofia who we now having living with us.

This is the first significant break I will have had in my working life and I am

EXCELLENCE
Matatau

PRIDE
Kaha

SPIRIT
Mana



Vision

Empowering akonga to be culturally inclusive and engaged community members of the future. Striving to excel, standing with pride and connecting with spirit.



Mission

Ebbett Park School will challenge students to excel and provide them With all they require to be lifelong learners.

School Apps

ClassDojo

A free app we use to reward students and an easy way to communicate with your Child's teacher.



Skool Loop

A free app for us to share notices, for parents to sign permission slips and to inform us of your child's absences.



Seesaw

A free app to access your child's learning and experiences while at Ebbett Park School.



looking forward to it while also knowing that I will miss my EPS whānau like crazy.

Please take care of yourselves and each other and I look forward to being back in at school in term 2.

Kate Medicott

To ALL Students Returning to School

If you see any of the following:

- *another student struggling to make friends
- *another student being picked on
- *a student who is new, shy, or not with the "in crowd"
- *a student who is eating lunch alone

Be a Leader! Be a Warrior!

Say hi. Smile at them. Ask if you can sit with them. Include them. You never know what that person is facing inside or outside of school.

**YOUR KINDNESS WILL
MAKE A DIFFERENCE IN
SOMEONE'S LIFE**



INTRODUCING OUR AWESOME 2022 EPS TEAM



Ms Kate Medicott

Principal

kmedlicott@ebbettpark.school.nz



Mr Hamish Dufty

Acting Principal term 1, Deputy Principal, SENCO and Room 5 teacher.

hdufty@ebbettpark.school.nz



Mrs Anna Bush

Reading Recovery and Literacy Lead

abush@ebbettpark.school.nz



Mr Shane Shaughnessy

Teacher Rm 8

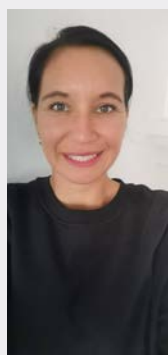
soshaughnessy@ebbettpark.school.nz



Mrs Annie Rurawhe

Teacher Rm 10

arurawhe@ebbettpark.school.nz



Ms Valeria Tokoar

Release Teacher Rms 5 & 9

vtokoar@ebbettpark.school.nz



Mrs Kana Tere-Taylor

Teacher Rm 4

kana@ebbettpark.school.nz



Mrs Kelly Kupa-Marsh

Teacher Rm 9, Kahui ASL (Across School Leader)

kkmarsh@ebbettpark.school.nz



Mrs Anna Kumar

Teacher Rm 7

akumar@ebbettpark.school.nz



Ms Anya Morrish

Teacher Rm 6

amorrish@ebbettpark.school.nz



Mrs Averil Wilbraham

Office Administrator

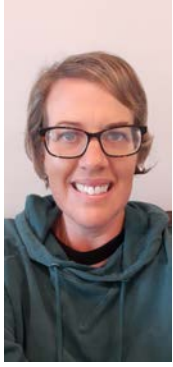
admin@ebbettpark.school.nz



Mrs Melanie Lummus

Librarian and ESOL Teacher

mlummus@ebbettpark.school.nz



Mrs Janni Martin

Classroom Release Teacher

jmartin@ebbettpark.school.nz



Mrs Michelle Thompson

Teacher/Learner Support

mthompson@ebbettpark.school.nz



Whaea Nora

NZSL Deaf Communicator

nmoana@ebbettpark.school.nz



Ms Cindy Morrell

Student Health Co-ordinator

cmorrell@ebbettpark.school.nz



Mrs Darlene Thompson

Teacher/Learner Support

darlene@ebbettpark.school.nz



Whaea Lana

Teacher.Learner Support

lrichards@ebbettpark.school.nz



Ms Leah Conrad

Teacher/Leaner Support

lconrad@ebbettpark.school.nz



Sarah Jackson

NZSL Deaf Communicator



Jo Hansen

NZSL Deaf Communicator



Mr Paul Woon

Ebbett Park School Caretaker

EPS OPERATIONS UNDER COVID PROTECTION FRAMEWORK

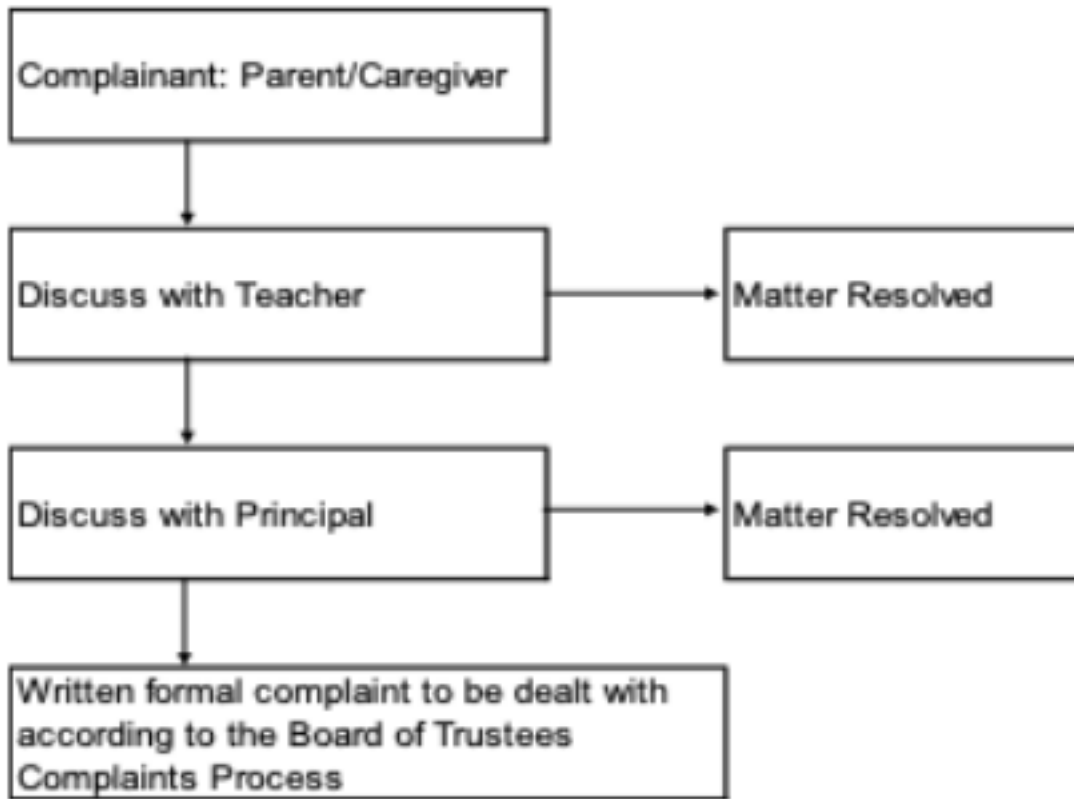
How Ebbett Park School will operate under the CPF

Activity/Event	Green	Orange	Red
School Day	School is open to every learner Normal breaks No bubbles Tamariki in playground together Only vaccinated whānau on school site Masks are mandatory by all adults in buildings Visitor can enter school, sign in, sanitise and mask	School is open to every learner (Vaccinated and nonvaccinated) Normal breaks No bubbles Tamariki in playground together Masks are mandatory by all adults Visitor are not permitted on site	School is open to every learner (Vaccinated and nonvaccinated) Learners can learn from home and whānau must make their requests to the principal so that learning can be monitored. Staggered breaks Bubbles Masks are mandatory by all adults Visitor are not permitted on site Masks are mandatory for learners Year 4 and up.
Assembly	Take place No limits to tamariki Whānau attend with CVC	Limited to 100 No whānau	Will not take place
Getting Connected Days	Take place – in classroom Bookings made 25min session with 5mins between booking to allow exiting No entry before allocated time Sign-in happens at classrooms Masks mandatory	Take place – in open space (field weather permitting) Bookings made 25min session with 5mins between booking to allow exiting No entry before allocated time Sign-in happens at classrooms Masks mandatory	Take place via Zoom and not on site.
Entering school in the morning	Entry to school is 8.15 Waiting on back court for bag/bell at 8.30 All learners in classrooms with teachers	Entry to school is 8.15 Directly to classrooms All learners in classrooms with teachers	Entry to school is 8.15 Directly to classrooms All learners in classrooms with teachers
Exiting school in the afternoon	Staggered exit: 2.30 OSCAR 2.40 Whānau Group 2.45 Nor-whānau Group No loitering on school property or at the front gate Whānau to wear masks and social distance	As per Green	As per Green
Office Entry	Entry is not limited CVC Whānau access Sign in and register pass via Vistab Masks	Access is limited Whānau call from gate Limited to maximum of 3 in office at one time CVC and masks mandatory	Access is limited Whānau call from gate Limited to maximum of 1 in office at one time CVC and masks mandatory
School events on site (sport, cultural etc)	Events to go ahead All learners involved together Spectators allowed access CVCs and masks mandatory by all spectators	Events to go ahead All learners involved together No spectators allowed	Events to go ahead in bubbles No spectators allowed
Interschool events off site (sporting, cultural etc)	Participation allowed Protocols of event organisers followed	Participation determined on individual event Organiser protocols, venue and risk factors evaluated to determine participation	No participation
Use of school facilities (Hall, playground, pool etc)	Access available Masks and school protocols to be adhered to (cleaning etc)	Access is limited to 100 Masks and school protocols to be adhered to (cleaning etc)	Access is not granted
Lunches	Continues Lunch is eaten together as class units outside their classrooms	Continues Lunch is eaten together as class units outside their classrooms	Continues Lunch is eaten together as a class unit inside their classrooms
External Curriculum Agencies	Access granted Masks and school protocols to be followed CVCs required	Access granted Sessions limit to 50 in space and seated with 1m2 social distancing CVCs Masks required on entering and exiting but not required during presentation / sessions	Not to take place on site

Friendly Reminders

Complains or concerns

Please follow the procedure below if you have any issues or concerns.



Your first port of call is the classroom teacher, followed by Hamish Dufty or Anna Bush with Kate Medicott as the last port of call.

Visitors to Ebbett Park School

- ▶All visitors are to SIGN in via the school office.
- ▶Please use the QR code for COVID tracking.

Parking and Gates

- ▶Both the Oliphant Road and Wall Road gates are used as entry and exit. This minimise congestion on both busy roads.
- ▶Please DO NOT park in neighbouring driveways, on grass verges or on yellow lines. This is for our tamariki's safety and those of the neighbours.
- ▶Parking and access to the school driveways is prohibited. Both these areas MUST be kept clear in case of emergencies.

Crossings

▶ Both learners and whānau are expected to use the crossings. This is a safety expectation.

Signing late learners in and early leavers out

- ▶ Any late learner must be accompanied by an adult to sign them in at the office.
- ▶ Late arrivals are NOT to go directly to the classroom.
- ▶ When collecting a learner early they MUST be signed out via the office.
- ▶ No learner will be released from class without the appropriate card from the office.

Absentee Learners

- ▶ Please make contact regarding any learner that is not going to be at school by 9.00am on the day.
- ▶ Contact can be made via: Skool Loop (Absentee button), email admin@ebbettpark.school.nz, calling the school office 06-8789599.
- ▶ If away for a number of days please inform us of all days of absences.

School Apps and communication

- ▶ We will communicate with you through a number of platforms. Please ensure that you are connected to all three school apps: Seesaw, classdojo and Skool Loop.
- ▶ The school Newsletter will be out every week on a Monday.

Uniform

- ▶ HATS - are required this term and term 4. Please ensure your children have hats by next week. Hats are available from the school office at a cost of \$8.00.
- ▶ Please ensure ALL uniform is clearly named.

ALL school uniform is now to be purchased through the school office

The **new uniform** is **NOT** an **expectation** unless you are a **NEW ENROLLING** learner.

The **old uniform** is **STILL current** and can be worn by any of our 2021 learners.

The old and new uniform CAN NOT be worn together.

If you are a learner that is starting Ebbett Park School for the very first time in 2022 you are expected to purchase a NEW UNIFORM.

Please contact the office and make an appointment to purchase uniform.

School Dates for 2022

Term 1: 31 January - 14 April

Term 2: 2 May - 8 July

Term 3: 25 July - 30 September

Term 4: 17 October - 15 December

Teacher Only Days for 2022 (to date)

Friday 12th August

Friday 9th September

CALENDAR:

TERM ONE

2022

Week 2: Monday 7th: Waitangi Day Observed Holiday - School Closed

Feb Tuesday 8th: Music lesson begin (rooms 5, 9 and 10 only)

Week 3: Thursday 17th: Kiwi Can Classes begin for all classrooms

Feb Board of Trustees meeting, 6.15pm at Ebbett Park School.

Week 4: Tuesday 22nd: PALs training (Sports and Play) at Ebbett Park School.

Feb

Week 5: 28th February - 4th March

Feb/March Nothing booked

Week 6: Monday 7th: Road Patrol Refresher - Oliphant Road

March Tuesday 8th: Road Patrol Refresher - Southland Road, Mobile Ear Clinic in

Week 7: Monday 14th - Friday 17th: IEP Week

March

Week 8: 21st March - 25th March

March Nothing booked

Week 9: 28th March - 1st April

March/April Nothing booked

Week 10: Wednesday 6th: Kahui Ki-o-rahi Competition (selected learners only)

April

Week 11: Wednesday 13th: Kahui Ki-o-rahi Competition postponement date

April Thursday 14th: Last Day of Term 1 (finish time as per normal day)

Friday 15th: GOOD FRIDAY

Term 2 begins on Monday 2nd May, 2022

PUBLIC NOTICES