

EBBETT PARK SCHOOL

EXCELLENCE, PRIDE & SPIRIT



What's Been Happening?

We had a great start to the term. This term is a short term and there will be a lot of things going on so please make sure you check out the calendar found in the newsletter and connect to Skool Loop, Seesaw and Classdojo to stay in touch.

Thank you to Emily and Mamasdonuts for coming in last Thursday. It was great having a local business showing off their fantastic products. Thank you also to Mrs Tere-Taylor and Whaea Anya for their amazing help as well.



Loud Shirt Day

Thank you to everyone who dressed up in their loud shirts and brought a gold coin donation into school. We raised \$115.00

Year 6 Camp

Next week our Year 6 students will be off to camp. This will be our first camp in two years. All the best and have lots of fun.



Vision

Empowering aroha to be culturally inclusive and engaged community members of the future. Striving to excel, standing with pride and connecting with spirit.



Mission

Ebbett Park School will challenge students to excel and provide them with all they require to be lifelong learners.

EXCELLENCE
Matatau

PRIDE
Kaha

SPIRIT
Mana

School Apps



ClassDojo

A free app we use to reward students and an easy way to communicate with your Childs teacher.



Skool Loop

A free app for us to share notices, for parents to sign permission slips and to inform us of your child's absences.



Seesaw

A free app to access your child's learning and experiences while at Ebbett Park School.

TERM 4 - Hats, hats, hats

As term 4 is identified as a sunny term ALL learners are required to wear a BLUE school hat.

These can be purchased from the school office at \$8 each.

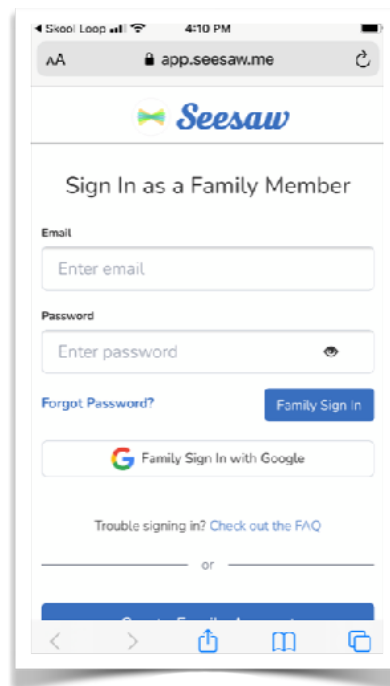
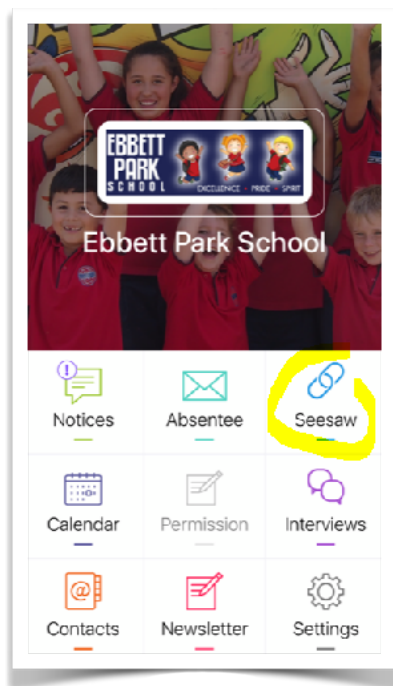
Learners will have one weeks grace to get this sorted.

Any learner WITHOUT the CORRECT School HAT from Tuesday 25th October will be out of the playground during school break times and sports sessions.



Skool Loop Update

The App has been updated! Your Seesaw parent portal is now linked to your app, making it easier for you to log in straight from Skool Loop.



2023 Ebbett Park School Uniform

ALL learners are expected to be in the NEW school uniform beginning of the 2023 school year.

Please book at time to size your child for the new uniform and order it. This will ensure that we have the uniform and that payment can be made.

To book a sizing please contact Ms Avie, via the school office: 06 8789599 or admin@ebbettpark.school.nz.

School Apps



ClassDojo

A free app we use to reward students and an easy way to communicate with your Childs teacher.



Skool Loop

A free app for us to share notices, for parents to sign permission slips and to inform us of your child's absences.



Seesaw

A free app to access your child's learning and experiences while at Ebbett Park School.



Positive Behaviour 4L LEARNING



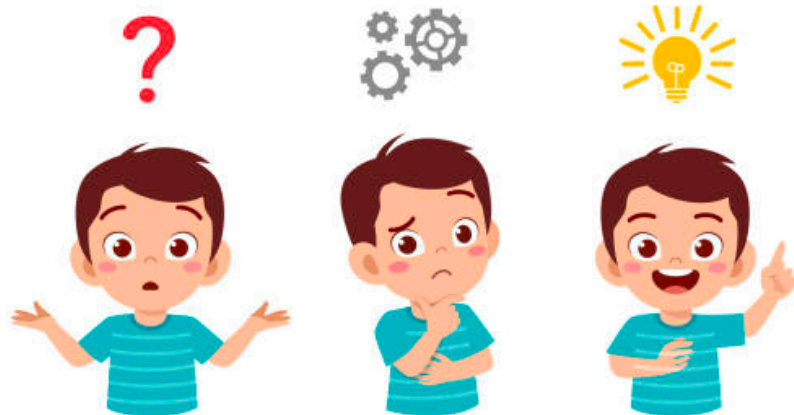
Our PB4L focus:

For the next two weeks our tamariki will be exploring values of spirit/mana.

Some of the questions that students will be exploring are:

What is spirit? What is mana?

How do you show spirit and mana in the classroom, playground, sports field, at assembly, at home or in the community?





Positive Behaviour 4 LEARNING



Our Term Four Clasdojo Leaderboard

Each week our students are busy showing off their awesomeness and earning Clasdojo points. As a parent you can also see how many points they are getting and what they are getting their points for. If you are not connected to Clasdojo please contact your child's teacher and they will help you.

Week One

RONGO

Week Two

Week Three

Week Four



Week Five

Week Six

Week Seven

Week Eight

Term Four Winner

School Uniform

Please ring the office to organise your child's new uniform



Shirt

\$40.50



Shorts

\$40.50



Sweatshirt

Without student
name \$70

With student name
\$75

Ebbett Park School

Contact List

Ms Avie (Office Administrator)	☎ 06 878 9599 or email: admin@ebbettpark.school.nz
Ms Medlicott (Principal)	principal@ebbettpark.school.nz
Mr Dufty (Deputy Principal)	hdufty@ebbettpark.school.nz
Mrs Tere-Taylor (Room 4)	kana@ebbettpark.school.nz
Mrs Millie Ormond	mormond@ebbettpark.school.nz
Ms Tokoar (Room 5)	vtokoar@ebbettpark.school.nz
Whaea Anya (Room 6)	amorrish@ebbettpark.school.nz
Mrs Harris (Room 7)	jharris@ebbettpark.school.nz
Mr O'Shaughnessy (Room 8)	soshaughnessy@ebbettpark.school.nz
Whaea Kelly (Room 9)	kkmarsh@ebbettpark.school.nz
Mrs Rurawhe (Room 10)	arurawhe@ebbettpark.school.nz
Mrs Bush (Reading Recovery)	abush@ebbettpark.school.nz



www.ebbettpark.school.nz



CALENDAR: TERM 4, 2022

Please attach this to your fridge or calendar.

- Week 2: **Monday 24th: LABOUR DAY - SCHOOL CLOSED**
October **Wednesday 26th: Junior Hockey session 2/6**
Wednesday 26th: BOT meeting #7 at 5.30pm at EPS
- Week 3: **Monday 31st: Junior Hockey session 3/6, Camp for Room 5**
Oct-Nov **Wednesday 2nd: Junior Hockey session 4/6**
Thursday 3rd: Ki-o-rahi Kahui Competition (selected students only)
Friday 4th: 2023 Road Patrol Training/selection - Oliphant Road
(selected students only)
- Week 4: **Monday 7th: Junior Hockey session 5/6**
Nov **Friday 11th: 2023 Road Patrol Training/selection - Southland Road**
(selected students only)
- Week 5: **Monday 14th: Last Junior Hockey session 6/6**
Nov
- Week 6: **Wednesday 23rd: Inter-school athletics and Music Concert (pm)**
Nov (selected students only)
Thursday 24th: Beach Education Day 1: Years 4-6
Friday 25th: Beach Education Day 2: Years 0-3
- Week 7: **Monday 28th: HB Primary/Int Triathlon Champs**
Nov/Dec **Thursday 1st: BOT meeting @5.30pm**
- Week 8: **Monday 5th: 2022 Road Patrol Splash Planet Day (10am - 3pm)**
Tuesday 6th: Service Assembly 11.30am. and Celebration Assembly 1.30pm
Wednesday 7th: Classroom moving day 11.30 - 3.00pm

Thursday 8th: 2023 Classroom transition visit 1/2 11.30- 12.30

Friday 9th: 2023 Classroom transition visit 2/2 11.30 - 12.30

Week 9: Monday 12th: End of Year Prize Giving 11.30am start

Tuesday 13th: Last Day of Term and of the 2022 academic year.

2023 academic year begins Monday 30th January

Monday 30th January and Tuesday 31st January: Getting Connected Days - sessions to be booked via the Skool Loop App

Wednesday 1st February: All learners back at school together

PUBLIC NOTICES

A MUST SEE Event

If you are a parent of a teen this is a highly recommended presentation - you will gain an insight into how the teen brain functions during these critical years.



Teen Brain

Navigating those tricky years with your adolescent

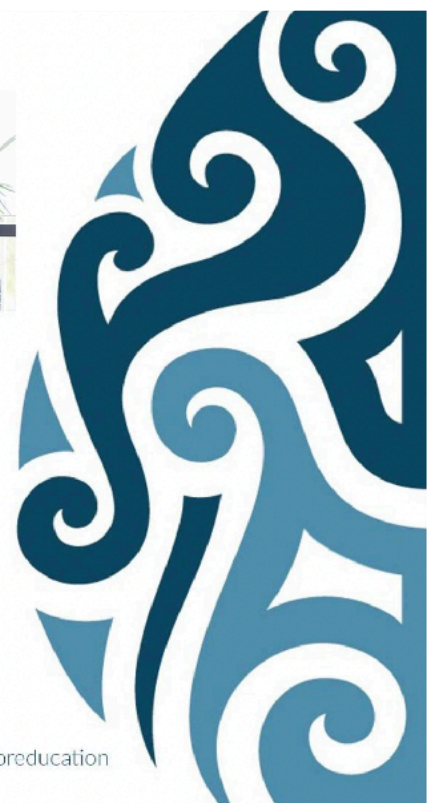
Napier Girls High School - NAPIER

Thurs 3rd Nov 2022 - 7:30pm - 9:00pm

Tickets at [eventfinda.com.au](https://www.eventfinda.com.au)

 @nathandwallis

 @nathanwallisxfactoreducation



ABOUT SENSE RUGBY



Does your child/ young person need a supported opportunity to:

- Develop their confidence and self-esteem
- Find a regular activity that can be their own
- Find a way to get the movement they seek in an appropriate environment
- Make friends
- Learn how to follow instructions, wait their turn and be part of a group
- Improve their ability to self-regulate
- and most importantly have fun...

Then please get in touch to find out more!



**TERM 4 SATURDAYS
DATES:**

29/10/22 - 17/12/22

GROUP TIMES:

9AM - 10AM

(5-11-YEAR-OLDS)

10AM - 11AM

(12 YEARS+)

LOCATION:

**NAPIER OLD BOYS MARIST
RUGBY CLUB**

**SPORT
HAWKE'S BAY**

Molly Deighton
(Occupational Therapist)
molly@senserugby.co.nz
senserugby.com.au