

# EBBETT PARK SCHOOL

EXCELLENCE, PRIDE & SPIRIT



## WHAT HAS BEEN HAPPENING

### Being Prepared.

As you are well aware we have moved into Phase Three of the Omicron Response Plan. So what does this mean for our Ebbett Park School whanau? You will now only need to isolate if you are a household contact of a confirmed Covid 19 case.

**Cases:** Isolate for 10 days (self-release after 10 days)

**Household contacts of a confirmed Case:** Isolate until Case completes 10 days. Test Day 3 and Day 10 of the case's isolation, or if symptomatic.

**Close Contacts:** No requirement to isolate. Self-monitor for 10 days and test if symptomatic.

We are continuing with our Covid plan at Ebbett Park School. This move into Phase Three does however mean that it is more likely that covid 19 will affect our community and school. Please be assured that we are doing everything we can do to keep our school open and your children safe. If you or your child are feeling unwell please look at getting tested and stay safe. If a child is at school and becomes unwell we will contact you immediately. Please let us know if you and your child are isolating so we can inform their teachers.

A few things parents and caregivers can do to help us are:

- Make sure you are connected to our school apps (Skool Loop, Seesaw Family and Classdojo).
- Make sure we have your correct details - phone number and email address.
- Explore how your child can connect to online learning if isolating at home.

EXCELLENCE  
Matatau

PRIDE  
Kaha

SPIRIT  
Mana



### Vision

Empowering akonga to be culturally inclusive and engaged community members of the future. Striving to excel, standing with pride and connecting with spirit.



### Mission

Ebbett Park School will challenge students to excel and provide them With all they require to be lifelong learners.

## School Apps



### ClassDojo

A free app we use to reward students and an easy way to communicate with your Childs teacher.



### Skool Loop

A free app for us to share notices, for parents to sign permission slips and to inform us of your child's absences.



### Seesaw

A free app to access your child's learning and experiences while at Ebbett Park School.

I would also really like to thank all of our Whanau who have been informing us when their children can not come to school due to being a close contact or they are off for a test. Your communication with us is greatly appreciated.

Mr Dufty

## Managing issues in the Classroom and Playground.

Over the last week, we have been discussing the importance of managing ourselves and our behaviour in the classroom and playground. Whenever students feel upset or feel something unjust has happened we really need them to make sure they speak to an adult. When out in the playground we have plenty of teachers on duty and visible to students. Quite often you will hear students and teachers talking about 'Using Our WITs'. This simple acronym is used to explain the simple steps and what to do when you need help. Any child who is willing to make a difference by using their WITS or speak to a teacher is an Ebbett Park School legend.

**W = Walk away.**

**I - Ignore.**

**T - Talk to someone.**

**S - Seek help.**

Positive Behaviour  
**4 LEARNING**

## EIT Candidate Teachers.

We are lucky to again have amazing group of EIT Candidate teachers at Ebbett Park School. This partnership with EIT means we have a group of training teachers working in our school and learning from our amazing staff. During this term they will have a practicum and this is when they get to teach and manage a classroom for a few weeks.



Miss Charlotte Bell, Miss Neve Christian and Ms Jess Lomax

## School Apps

### ClassDojo



A free app we use to reward students and an easy way to communicate with your Childs teacher.



### Skool Loop

A free app for us to share notices, for parents to sign permission slips and to inform us of your child's absences.



### Seesaw

A free app to access your child's learning and experiences while at Ebbett Park School.

# Positive Behaviour 4 LEARNING

## Week 4 CLASSROOM CHAMPIONS.



Azaariyah - pride in being focused on her learning.



Robert - pride in being focused on his learning.



Faaea - spirit for speaking kindly and always showing respect.



Cassie- showing excellence by being focused her learning.



Tayton- showing pride by sharing his ideas and supporting others.



Baxter- showing spirit by growing in confidence and trying new things.



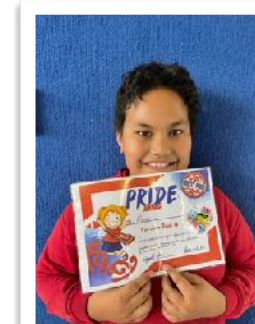
Huxley - showing spirit by challenging himself with new learning.



Sofia - showing excellence with her letter formation.



Soul - showing spirit by showing respect for everyone.



Manaia - showing pride by giving everything a go.



Aaliyana - showing excellence by managing herself in class.

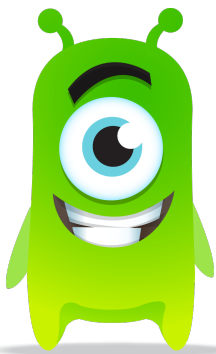


# Positive Behaviour 4L Learning



Each week our students are busy showing off their awesomeness and earning Clasdojo points. As a parent you can also see how many points they are getting and what they are getting their points for. If you are not connected to Clasdojo please contact your child's teacher and they will help you.

Week One  
**Tane Mahuta**



Week Two  
**Tangaroa**



Week Three  
**Tawhirimatea**



Week Four  
**Tane Mahuta**



Week Five

Week Six

Week Seven

Week Eight

Week Nine

Week Ten

Week Eleven

Term One Winner

## Our Week 5 PB4L Focus is: Spirit

How do we show spirit in our classroom, playground and at home?

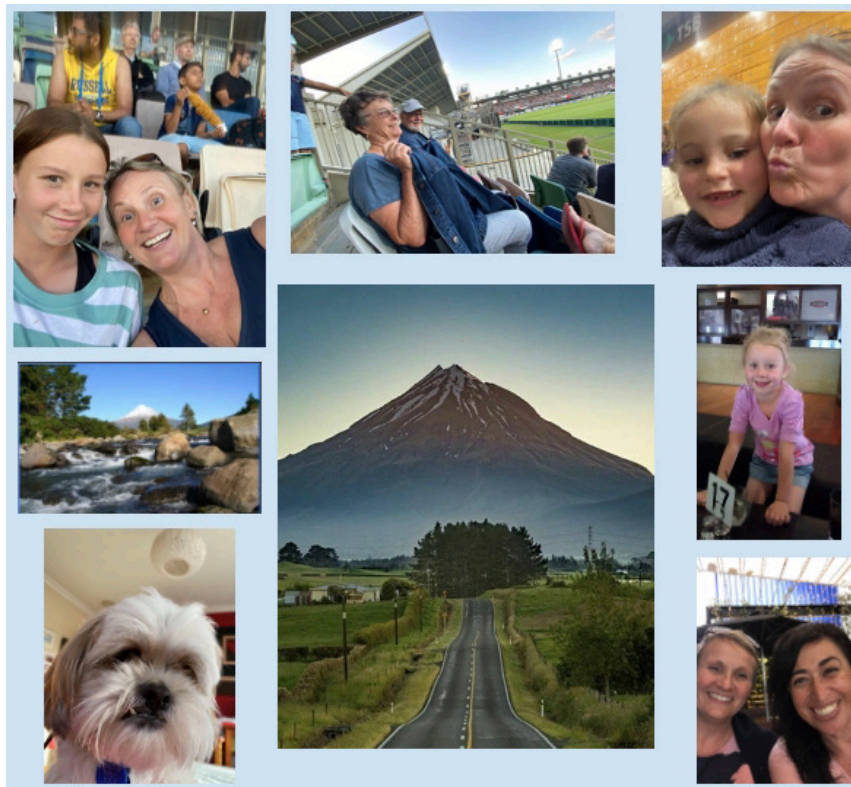
# Staff Spotlight

EACH WEEK WE WILL SHARE OUR PEPEHA PROJECT.



KIA ORA TĀTOU  
GREETINGS ALL  
KO TE MATA TE MAUNGA  
TE MATA IS THE MOUNTAIN  
KO TUKITUKI TE AWA  
TUKITUKI IS THE RIVER  
NŌ HERETAUNGA AHAU  
I AM FROM HASTINGS  
KO BUSH TŌKU WHĀNAU  
BUSH IS MY FAMILY  
KO ANNA TŌKU INGOA  
MY NAME IS ANNA

Anna Bush Reading Recovery and Literacy Lead.



KO TE AHUREI O TE  
TAMAITI ARAHIA Ō  
TATAU MAHI  
TENA KOUTOU  
E HOA MĀ  
KAU TAE MAI NEI  
I TENEI RA  
I TIPU AHU I RARO I TE MAUNGA O TARANAKI  
I TIPU AHU I TE TAHA O TE AWA O WAIAHAKAHIO  
KO MEDLICOTT TŌKU INGOA WHANAU  
KO PAKEHA TE IWI  
KO PAT TŌKU PAPA  
KO JUDY TŌKU MAMA  
KO IZOBELLE TĀKU TAMAHINE  
KO KATE TŌKU INGOA  
NO REIRA, TENA KAUTOU, TENA KAUTOU, TENA  
KAUTOU KATOĀ.

Kate Medicott Ebbett Park School Principal

# Classroom Spotlight

## Room 9

Kia ora e te whanau o Te Kura o Epata!

Nau mai, haere mai ki te Ruma Iwa

We are the Year 5 class here at Ebbett Park School and we have a room full of amazing learners. We have 28 students who are capable, collaborative and fun. Whaea Kelly teaches in Room 9 Monday through to Wednesday and then Miss Tokoar comes in on Thursdays and Fridays. We are very lucky to have the support of Whaea Lana, who is here everyday, Whaea Leah, and Miss Janni Martin, who comes in a couple of days throughout the term.

Our classroom program aims to support students in transitioning into a senior school learning program, which includes becoming familiar with technological tools and devices and using them to support their learning; sharing our thoughts and ideas with others; embracing our differences; developing more independence and collaborating as a learning whanau.

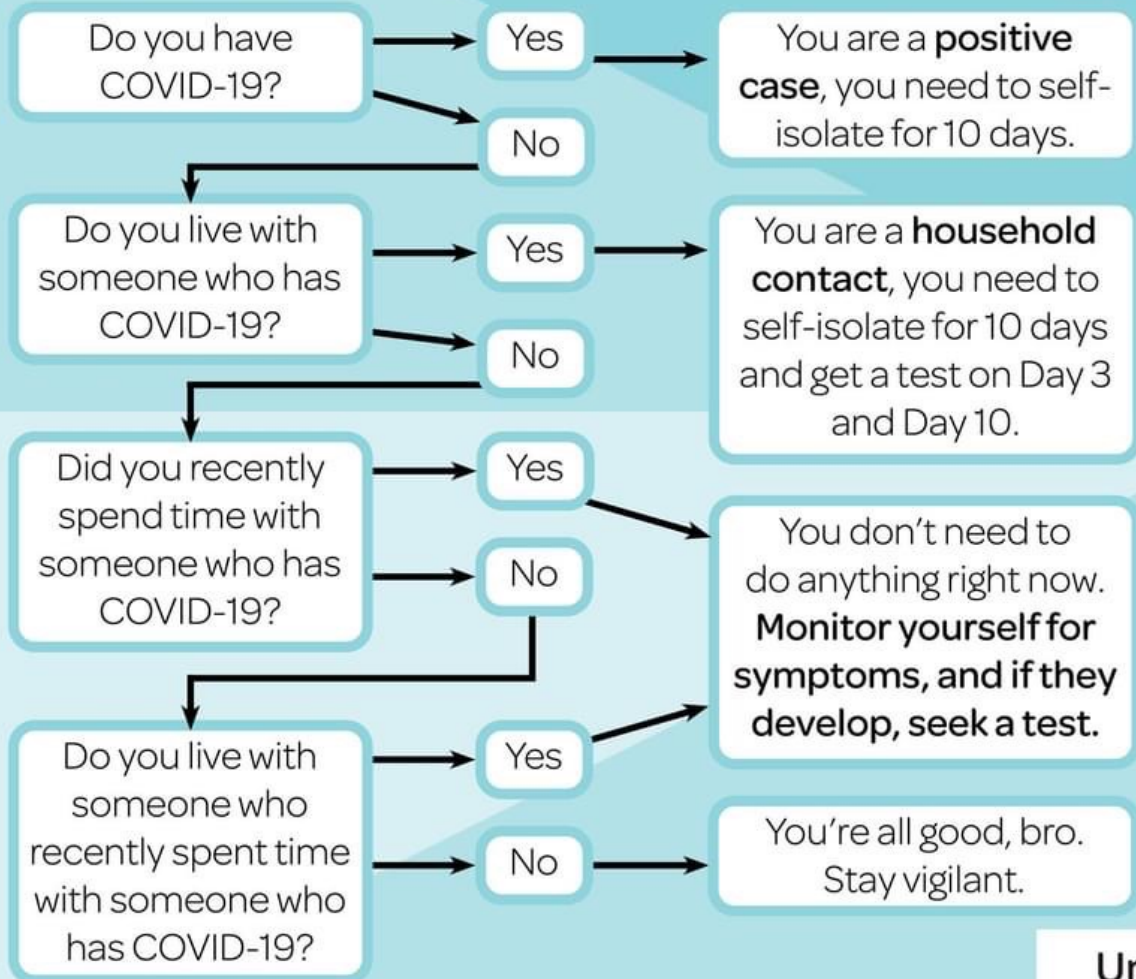
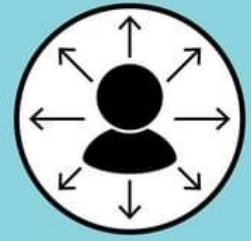
Our favourite things to do as a class are to play lots of learning games, quizzes and SPORTS! We love PE, and learning new games and skills. All of the adults in Room 9 are really enjoying how interactive, kind and engaged our learners are in their mahi.

Ka mau te wehi tamariki ma.





# What type of contact are you?



# CALENDAR:

# TERM One 2022

~~Week 2: Monday 7th: Waitangi Day Observed Holiday - School Closed~~

~~Feb Tuesday 8th: Music lesson begin (rooms 5, 9 and 10 only)~~

~~Week 3: Thursday 17th: Kiwi Can Classes begin for all classrooms~~

~~Feb Board of Trustees meeting, 6.15pm at Ebbett Park School.~~

~~Week 4: Tuesday 22nd: PALs training (Sports and Play) at Ebbett Park School.~~

~~Feb~~

Week 5: 28th February - 4th March

Feb/March Nothing booked

Week 6: Monday 7th: Road Patrol Refresher - Oliphant Road

March Tuesday 8th: Road Patrol Refresher - Southland Road, Mobile Ear Clinic in

Week 7: Monday 14th - Friday 17th: IEP Week

March

Week 8: 21st March - 25th March

March Nothing booked

Week 9: 28th March - 1st April

March/April Nothing booked

Week 10: Wednesday 6th: Kahui Ki-o-rahi Competition (selected learners only)

April

Week 11: Wednesday 13th: Kahui Ki-o-rahi Competition postponement date

April Thursday 14th: Last Day of Term 1 (finish time as per normal day)

Friday 15th: GOOD FRIDAY

**Term 2 begins on Monday 2nd May, 2022**