

EBBETT PARK SCHOOL

EXCELLENCE, PRIDE & SPIRIT

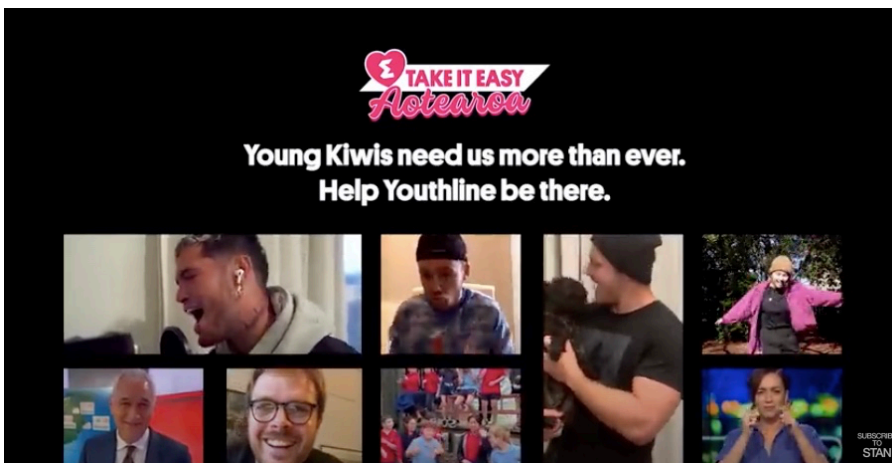


What's Been Happening

The Edge and 'Take it Easy' for YouthLine

Towards the end of 'Lockdown' the afternoon show on the edge announced that they were going to be banned together with Stan Walker and other NZ artists to raise money for Youthline NZ. THEY DID IT! Not only that but Ebbett Park School feature in the video.

CHECK IT OUT by going to our school Facebook page or School website



Changes at Level 2 for EPS

Today we welcome our school social worker, RTLB, RTLit, SLT, and other educational agencies back into school. They will follow all the required guidelines and will ensure that they are in completing all the work they need to do and then leave again. They will not be in and out of school as regularly as they would normally be.

Please be assured that we consider any changes to our routines very carefully and will continue to keep everyone safe.

EXCELLENCE
Matatau

PRIDE
Kaha

SPIRIT
Mana



Vision

Empowering ako to be culturally inclusive and engaged community members of the future. Striving to excel, standing with pride and connecting with spirit.



Mission

Ebbett Park School will challenge students to excel and provide them with all they require to be lifelong learners.

School Apps

ClassDojo

A free app we use to reward students and an easy way to communicate with your Childs teacher.



Skool Loop

A free app for us to share notices, for parents to sign permission slips and to inform us of your child's absences.



Seesaw

A free app to access your child's learning and experiences while at Ebbett Park School.



Please continue to use your allocated gate for school drop off and pick up's.

Please phone the school office if you require access to school as there is tracking paper work the MUST HAPPEN.

If it is not URGENT then please consider a phone call rather than a visit.

Please complete the Feedback form on the back page

Values Focus.

This week our Values focus is: EXCELLENCE

This week's focus is around looking after property. This is a great chance for learners and their whānau to check that ALL school uniform is named. If you need your uniform named then check out the ad at the end of this newsletter.

Junior Team: Look after Property

Senior Team: We look after personal and school property.

HOUSE CHALLENGE RESULTS

CONGRATULATIONS **RONGO** for winning week 7(5)'s house points last week. WAY TO GO

There was only 21 points in the win! 4869 points were handed out during the week!

LunchOnLine

Lunches will re-start 10th June 2020.

Dental checks

Community dental services reopen

Hawke's Bay DHB's community oral health services for tamariki have resumed under Alert Level 2 with dental hubs and mobile dental units open and operational from, Monday 18 May.

If your tamariki needs a routine dental check-up, or you have any dental concerns that may require an urgent appointment, please text our team on 027-273-6731 and we will be in touch to arrange a suitable time. Please be advised all tamariki will be verbally screened for COVID-19 and other minor

illness prior to appointments, as per Dental Council of New Zealand guidelines.

Public Notices



**HAWKES BAY
Embroidery
& PRINT**

NAME YOUR SCHOOL UNIFORM FOR FREE!

Hawkes Bay Embroidery & Print would like to help support our Local Families and Community.

Bring in any 2x school uniform items and we will embroider your child's name for FREE.

Come in and see us @ 87 Austin Street, Onekawa
Email us @ production@hbembroid.co.nz
or phone us on 06 843 4338

OFFER AVAILABLE TILL THE END OF JUNE



PARENT FEEDBACK FORM

Please complete and return to the School office by Friday 5th June

Return this for your child to received a prize!

Over the last few weeks we have implemented some changes to the way we do things at school and we would like your feedback on those changes.

Family Name:

Learners Name(s) and Room number(s):

PARENT/CAREGIVER	Like	Dont like	Do not mind either way
Using both gates for entry and exiting school			
Staggered break times			
Staggered leaving times			
Staff on the gates to greet and farewell learners			
Entry into school AFTER 8.15am			
Learners straight to class in the mornings upon arrival			
All After School Care learners leaving at 2.30pm			
Late arrivals wait at the gate for sign in			

Is there anything you would like to see us keep?:

General Comments/Feedback: