

# EBBETT PARK SCHOOL

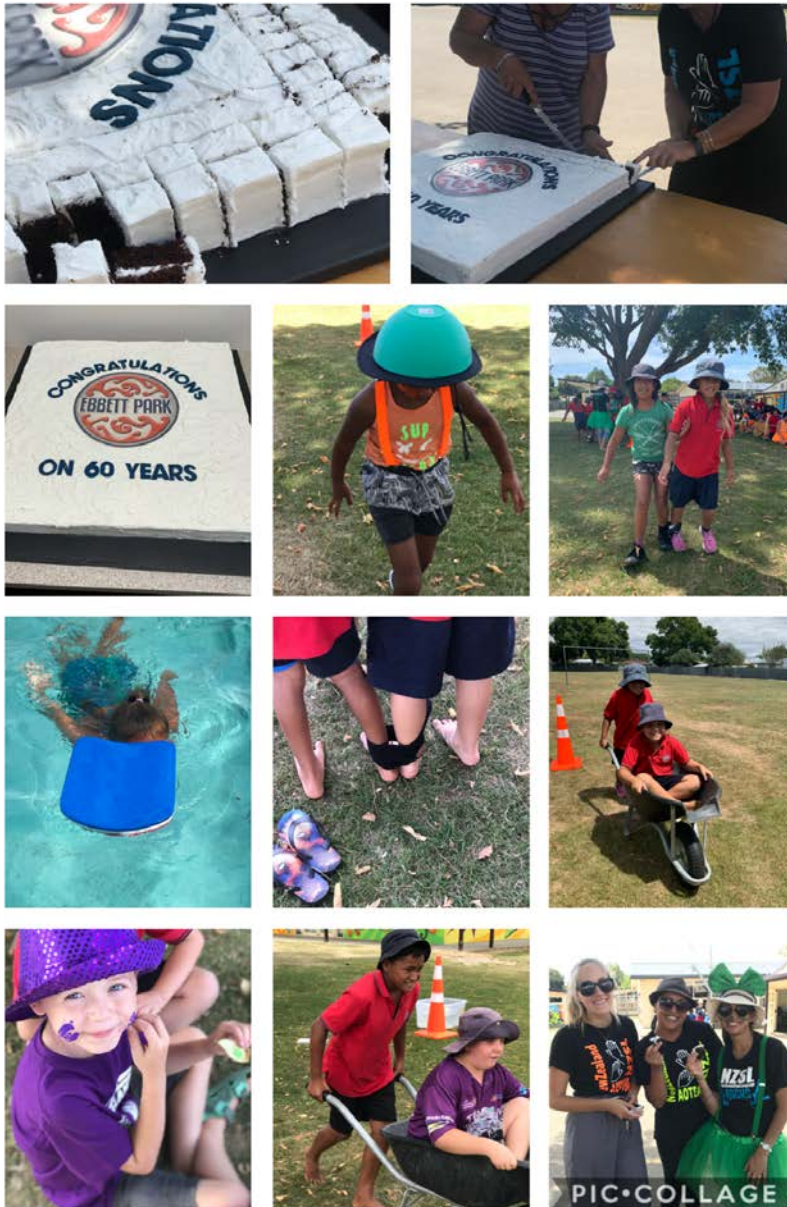
## EXCELLENCE, PRIDE & SPIRIT



### THE WEEK JUST BEEN...

#### 60th Birthday Celebration

I think these pictures say it all! For more please see the display in the hall.



#### Vision

Empowering ako to be culturally inclusive and engaged community members of the future. Striving to excel, standing with pride and connecting with spirit.



#### Mission

Ebbett Park School will challenge students to excel and provide them With all they require to be lifelong learners.

EXCELLENCE  
Matatau

PRIDE  
Kaha

SPIRIT  
Mana

## School Apps

### ClassDojo

A free app we use to reward students and an easy way to communicate with your Childs teacher.



### Skool Loop

A free app for us to share notices, for parents to sign permission slips and to inform us of your child's absences.



### Seesaw

A free app to access your child's learning and experiences while at Ebbett Park School.



## Weetbix Triathlon

Congratulations to those learners who got involved in the weetbix triathlon this year. We had the smallest representation on the day BUT our team performed outstandingly. It was great to see the school values on display outside of the school environment. You ALL did us proud.



## ENVIRONMENTAL IMPROVEMENTS - HELP WANTED!

On **Saturday 29th February** (Yes, its a leap year!) we are looking for **helping hands** to repair our fort and paint the playground. The day will start at **9am** and run until we are finished. The more helpers we have the faster we will be done.

## SCHOOL DRIVEWAY

**For the SAFETY of our LEARNERS the school driveway and area in front of it is NOT for access.** Please **DO NOT STOP** in front of the driveway or park down the driveway. Please do not be offended if you are asked to shift your car. The cones are there as a remind that the driveway is not to be accessed by anyone other than staff or emergencies. We appreciate your understanding and cooperation with this.

## Celebrating Success

### Classroom Champions: Week 4

CONGRATULATIONS to our classroom champions for week 4 this term. These students continued to show our school values and have been identified as great role models this week.

Well done: Harlem, David, Lars, Kryshayla, Tangaroa, Harlo, Cassie and George.





# Things to Note

## School Values Focus for Week 4

This week we are focusing on working as a team.

This is all about collaboration, sharing responsibility and supporting one another to ensure that we are doing the right thing at all times.



## School Lunch Orders

A promotional flyer for Lunchonline. The text reads: "WOW \$3 Pitas on 27/02/2020", "Ebbett Park School", "\$3 Pitas on Thursday 27th February", "Order cut off time is 09:00am Thursday", "Normal prices resume following week", "Order your children a Yummy Nutritious Pita for lunch". At the bottom is the Lunchonline logo, website (www.lunchonline.co.nz), phone (0800 LOL LOL (0800 565 565)), email (info@lunchonline.co.nz), and tagline "Healthy and affordable | Easy internet ordering".

We have the availability to order a lunch on a Thursday and Friday ONLY. Thursday is PitaPit and Friday is Pizza. For this week ONLY Pita Pit have a promotional deal available with pita's at a highly reduced price. To order this you simply register with Lunchonline and it is all done for you.

### How do parents order?

Four easy steps to setting up an account on the website [www.lunchonline.co.nz](http://www.lunchonline.co.nz) and [placing an order](#):

- Create an account
- Register the students name, select the school and classroom number/name
- Make a payment so the account is in credit
- Make an order

## Rubbish-less School

When you are in at school next you will notice that the rubbish bins have been removed from the school environment. We are working our way to becoming a 'Rubbish - less School. Learners will be bringing home any packaging that their lunch comes to school in. The reason for this is to create a rubbish free environment and create problem solving learners and sustainable practices.

Please support us with this change in direction.

## School Apps

Please ensure that you are connected to school through: Skool Loop, Class Dojo and Seesaw.

**Skool Loop** is managed by the principal: this is where school wide messages can be found, newsletters, term calendar and Absentee messages. Eventually we will set up permissions and interviews so will be VITAL that you are all connected.

**Seesaw** is managed by the classroom teachers and is used to share learning and any important classroom information that you may need to know such as school wide messages that may not be on Skool Loop

**Class Dojo** is also managed by classroom teachers and allows parents to communicate directly with the classroom teachers and management as well as viewing how your child/ren are doing within school in regards to behaviour.

It is **IMPORTANT** to be connected to **ALL** these apps and monitor them regularly please.

## School Hats

Being term 1 hats are **REQUIRED**. We wear **BLUE BUCKET** hats. These can be purchased from the school office at \$8.00. Please ensure that your child/children have their hat so that they can be outside playing during our breaks and sport.

## Student IMMUNISATION - Action required

We would like to be able to access up to date learner immunisation information. We are able to do this through the immunisation register assessed by our school health nurse. If you **DO NOT WISH** us to access this information please contact the **SCHOOL OFFICE** and let Mrs Firn know. If we do not hear from you we will take it that you are happy for us to access this information regarding your child/ren.

## Issues or Concerns

From time to time things happen that need to be discussed or managed with staff. I ask that if you do have concerns or issues you **FIRST** see the classroom teacher directly - discuss and talk with them about what is going on so that they can act appropriately. The next person to call on is the team leader: Mr. Hamish Dufty for the senior classes and Mrs. Anna Bush for the junior team. Then move onto see either myself (Ms. Kate Medlicott) Principal or Mr. Hamish Dufty in his role as Deputy Principal.

If we are not made aware of events, concerns or issues it makes it very difficult for us to rectify a situation so **PLEASE** do come and talk with us about anything.

## WATER ONLY

Please remember that we are a WATER ONLY school, with the exception of the milk we get from Fonterra. This means that no other drinks are permitted at school. This includes our families while present on school grounds. Please do not be offended if you are asked to remove your drink off school property. We appreciate your understanding around this health concept.

## Health Return Slip

If you have not already done so can ALL FAMILIES please complete the return slip attached and bring into the school office. It is VITAL that we have up-to-date medical information for each and every student.

## Ebbett Park School Health Nurse

Sandy O'Shea is our Public Health Nurse.

She is here to support all families with any health and wellbeing concerns you may have with your children or any questions you may have about their health.

She visits the school every week or you can contact her directly on:

0272349379 or

[sandy.o'shea@hawkesbaydhb.govt.nz](mailto:sandy.o'shea@hawkesbaydhb.govt.nz)



# PUBLIC NOTICES

## Maycenvale United Junior Football Club

Sunday March 1st  
Regional Sports Park  
11.00 am -2.00 pm

Come and have a sausage sizzle and a play on the bouncy castle.  
Fees have been set at \$50 per child ( including a photo )  
Girls only teams as well as mixed teams

Any questions contact  
Trish 0272132135  
[trishlittle4@gmail.com](mailto:trishlittle4@gmail.com)



Your chance to try a bunch of cool sports,  
learn new skills & get information for free.  
**Come along and have a go!**

# HAVE A GO

**FREE** family sports day  
#conclusionwise

**Mitre 10 Park HB**  
**Sunday 29<sup>th</sup> March 2020**  
**10am - 2pm**

**MITRE 10 PARK**  
HAWKE'S BAY

INFO ⓘ [f BrainInjuryHB](#) [@braininjuryhb](#)  
CONTACT ⓘ [educator@braininjuryhb.co.nz](mailto:educator@braininjuryhb.co.nz)

**Brain Injury**  
HAWKE'S BAY

# CALENDAR: TERM 1 2020

- Week 5: **Monday 24th Feb: Running Club to begin at lunchtime (New Entry)**  
**Wednesday 26th Feb: Fire Wise Programme begins for Junior School**
- Week 6: **Thursday 5th March: First Tamariki Wananga (only selected students)**  
**Friday 6th March: TEACHER ONLY DAY - SCHOOL CLOSED**
- Week 7: **Friday 13th March: School Swimming Sports - house competition**
- Week 8: **Monday 16th March: Room 9 to MTG**  
**Thursday 19th March: Mitre 10 Tough Kids**
- Week 10: **Thursday 2nd April: Kāhui Combined Board Meeting 5.30pm (BOT member to attend)**
- Week 11: **Wednesday 8th April: Junior Market Day**  
**Thursday 9th April: TERM ENDS 2.45pm**  
**Friday 10th April: GOOD FRIDAY - SCHOOL CLOSED**
- TERM 2 **Term 2 begins: Tuesday 28th April, 2020**
- Week 1: **Monday 27th April: ANZAC DAY - SCHOOL CLOSED**

# RETURN SLIP (Everyone to complete)

Please complete and return this to the office as soon as possible - NOW OVERDUE!

## HEALTH FORMS

I am currently working to put together a robust Health data base for school. Part of this process is ensuring that we have completed and up-to-date health action plans for ALL students with allergies and/or medical conditions.

Some of you have already filled in or updated the appropriate forms for your children.

If you have not done this can you please indicate below which form you need sent home and we will organise this for you.

Please Indicate by selecting 1 of the 3 statements:

Name of Student:

Rm:

1. Has no medical conditions that you need to be made aware of.

2. Has medical conditions and I need the action plan forms to complete:

Health Forms I require:    Asthma

Diabetes    *(Please circle the forms you require)*

Eczema

Allergy

Other: *(which form)*:

3. Has medical conditions and I have already provided current and up to date action plans.

Parent/Caregiver Signature:

Date:





## Ebbett Park School

\$3 PITAS \$3 PITAS \$3 PITAS \$3 PITAS \$3 PITAS \$3

\$3 Pitas on Thursday 27th February

Order cut off time is 09:00am Thursday

Normal prices resume following week

Order your children

a Yummy Nutritious Pita for lunch



 **lunchonline**  
www.lunchonline.co.nz

Phone 0800 LOL LOL (0800 565 565)  
info@lunchonline.co.nz  
Healthy and affordable | Easy internet ordering